



TECHNICAL SPECIFICATION

Last update: April, 2022

GENERAL INFORMATION

ADDRESS & LOCATION

Södra Förstadsgatan 18, 211 43 Malmö, Sweden

E-mail: info@victoria.se

Phone no. +46 (0) 40 97 66 02

www.victoria.se

The Victoria Theater (Victoriateatern) is situated on the walking street in the city centre of Malmö at Södra Förstadsgatan 18.

Malmö city is a walking friendly area, and there is also a large range of cheap "fixed rate" taxi companies (fixed rate 6-10 euros apply during weekdays, on weekends ask for the meter).

LOAD IN

Load in of instruments and stage materials is done through the main entrance at Södra Förstadsgatan 18. Your vehicle can be parked right in front of the main entrance during load in. There is no doorbell, but knock hard on the glass, and we will open. If we can't hear you, call your floor manager or technician and we will open.

PARKING

We don't have our own parking, the closest one is at *Davidshallstorg*, 2 minutes away on foot, and the closest parking garage is at Kaptensgatan 4, *P-huset Anna*.

TECHNICAL DEPARTMENT

For more information and questions regarding technical issues, please contact us at: tech@victoria.se.

STAFF

Diego Gonzalez

Technical Manager

+46 (0) 708 85 66 12

diego@victoria.se

TECH RIDER

Please send your tech rider, stage plot and other technical requests to tech@victoria.se – well in advance.

INVENTORY LIST

SOUND

MIXING CONSOLE

1 x Yamaha LS9-32 (with remote iPad control)
32 x mono channels (6 used for FX returns)
16 x outputs (10 used, 3-FOH and 7-monitors)

PA SYSTEM

4 x L'Acoustics MTD 115a (L, R and C-cluster in mono)
2 x LLC 115b st
2 x L'Acoustics SB118
2 x HK elements (L-R)

MONITORS

2 x d&b max 15
4 x d&b max 12
2 x hk audio 12" (active)
5 x In Ear System Sennheiser ew IEM G4 E-Band

STAGE BOX

24 mono channels
8 returns

MICROPHONES

1 x DPA d:facto	
6 x DPA 4099	1 x Electro-Voice PL5
5 x Shure SM58	1 x Neumann KMS 105
8 x Shure SM57	2 x Neumann KM 184
1 x Shure Beta 87c	2 x Shure Beta 58a
1 x Shure Beta 52A	1 x AKG c411
2 x Sennheiser MD 421	1 x Shure beta 57
2 x Shure KSM 137	3 x Sennheiser e604
3 x AKG C 535 EB	2 x Sennheiser e906
2 x AKG C 214	1 x Milab LC-2

WIRELESS

- 2 x Shure ULX-D receiver
- 2 x Shure ULXD2 SM86 wireless hand mic.
- 2 x Shure ULXD1 beltpack
- 1 x Shure QLXD 14
- 1x Shure headset MX153T
- 2 x DPA 4088 headset (Shure connector 4 pin mini XLR)
- 2 x DPA 4061 lavalier (Shure connector 4 pin mini XLR)

DI LINE BOXES

- 6 x active line box BSS AR133
- 2 x passive line box stereo, Radial PRO D2
- 2 x passive line box mono, Radial PRO 48
- 3 x passive line box, Hi Pro
- 3 x active line box, Behringer

INSTRUMENT CLIPS

- 1 x DPA CC 4099
- 1 x DPA BC 4099
- 1 x DPA VC 4099
- 1 x DPA GC 4099
- 1 x DPA strap 4099
- 1 x DPA SC 4099
- 1 x DPA clip

STANDS

- 13 x high stands with boom
- 4 x high stands with long boom
- 2 x straight stands with round foot
- 5 x short stands with boom
- 1 x short stands with boom, round foot
- 1 x conference table stand
- 2 x short stands with cable
- 7 x guitar stands

BACKLINE

Grand piano: Steinway and Sons, Model O, 180 cm (No. 594446)

Stage piano: Clavia Nord Stage 3 88
Fender Rhodes Mark I (1974)

Guitar amplifier: Music Man 112 RD
Fender Twin Reverb 65

Bass amplifier: Music Man HD One Thirty (15" ampeg cab)

Drum set:

Gretsch Renown Drums

- Kick drum 22" x 18"
- Kick drum 18" x 16"
- Floor tom 16" x 14"
- Rack tom 12" x 8"
- Rack tom 10" x 7"
- Snare 14" x 6,5"

Cymbals

- Sabian thin crash 15" / 38 cm
- Sabian HHX studio crash 16" / 41 cm
- Istanbul Hihat 14" / 35 cm
- Istanbul ride 20" / 50 c

Stands for 6 cymbals

Hi-hat stand

TAMA iron cobra single pedal

DIGITAL FILM PROJECTOR

Panasonic PT-D5600E

Optics: DLE 200 (2,5 – 4,0:1)

Optics: XGA (1,8 – 2,5:1)

VIDEO EQUIPMENT FOR RECORDING AND STREAMING

Panasonic AW-UN70 (PTZ camera)

OTHER

12 x note stands

2 x piano chairs

2 x stage access steps

1 x single keyboard stand

1 x double keyboard stand

LIGHT

LIGHT MIXER

Avolites Quartz Titan with Mobile Wing

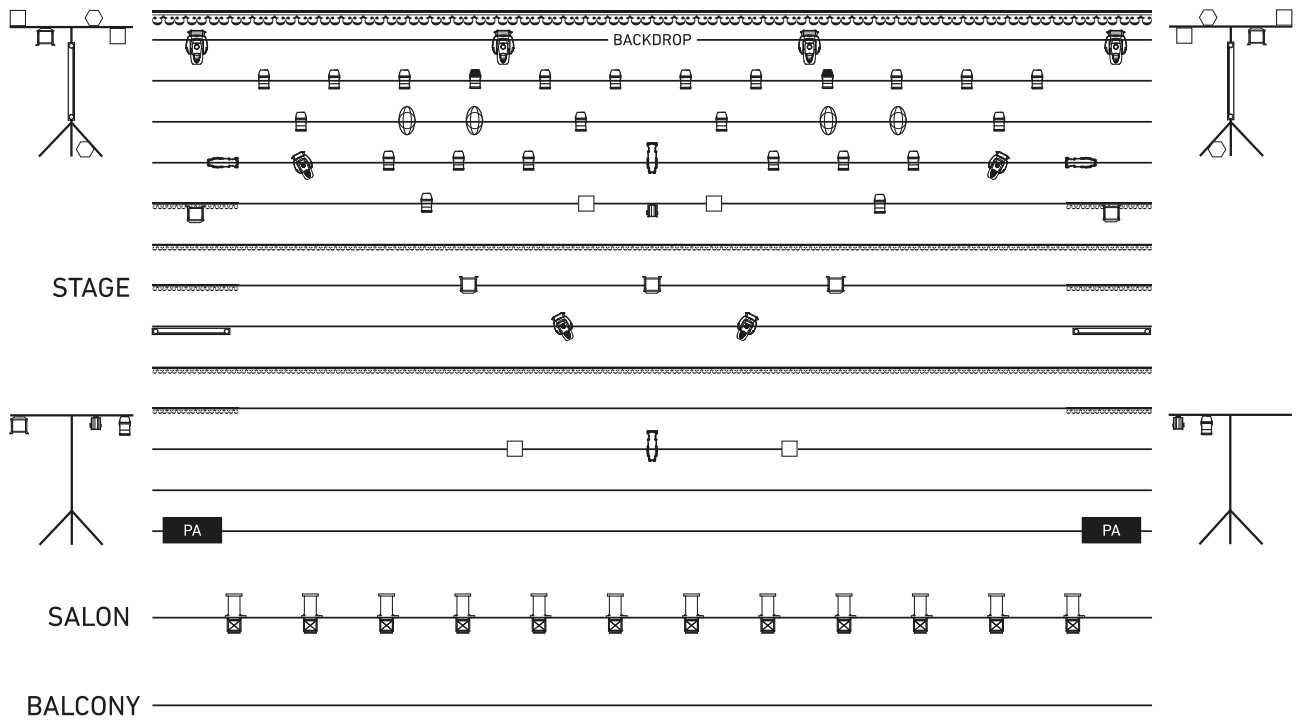
LAMPS







12 x Niethammer Enizoom profil 1200W	4 x 150W Flood
6 x ETC Source Four jr. profil 575W	14 x Lival CB 500, 50W Spot with el. Rail
5 x ADB A57F Fresnel 650W	4x Stairville Led Bar 240/8 RGB DMX
7 x ADB Flood 1000W	4 x ADJ 12P HEX B-Stock
5 x ADB Fresnel 1000W	4 x Martin Rush MH 8 Mini Profile
2 x Spotlight Fresnel 1000w	1 x Martin Krypton 250
30 x PAR 64	4 x Martin Rush MH 6
2 x PAR 64 shortnose	4 x Martin Rush MH 5
10 x PAR 64 shortnose metallic	
11 x Eurolite LED PAR-56 RGB 36x3W	2 x Cameo Hazer 1400 PRO
4 x PAR 36 Pinspot	1 x Hazer DMX

DIMMER & CABLES

38 x circuits in total
2 x Okero 1219 12 dimmer
1 x Avab 24 dimmer
QDmux DMX-processor and split
Eurolite DMX-split 6 x outputs
6 x Harting 230V, multicable with whips and sockets
8 x Cordial CDX 10-1 DMX
8 x Cordial CPM 10 FM-Flex

LIGHT PLOT



-  Front
-  Martin MH 8
-  Martin Rush MH5
-  Martin Rush MH6 (wash)
-  Par 64
-  Par 64 LED
-  Flood
-  Hex LED
-  Source Four Profil
-  LED bar
-  Fresnel
-  Mini Fresnel
-  Curtain

SALON & STAGE

TABLES & CHAIRS

146 x dark brown classic style chairs

50 x dark brown round tables

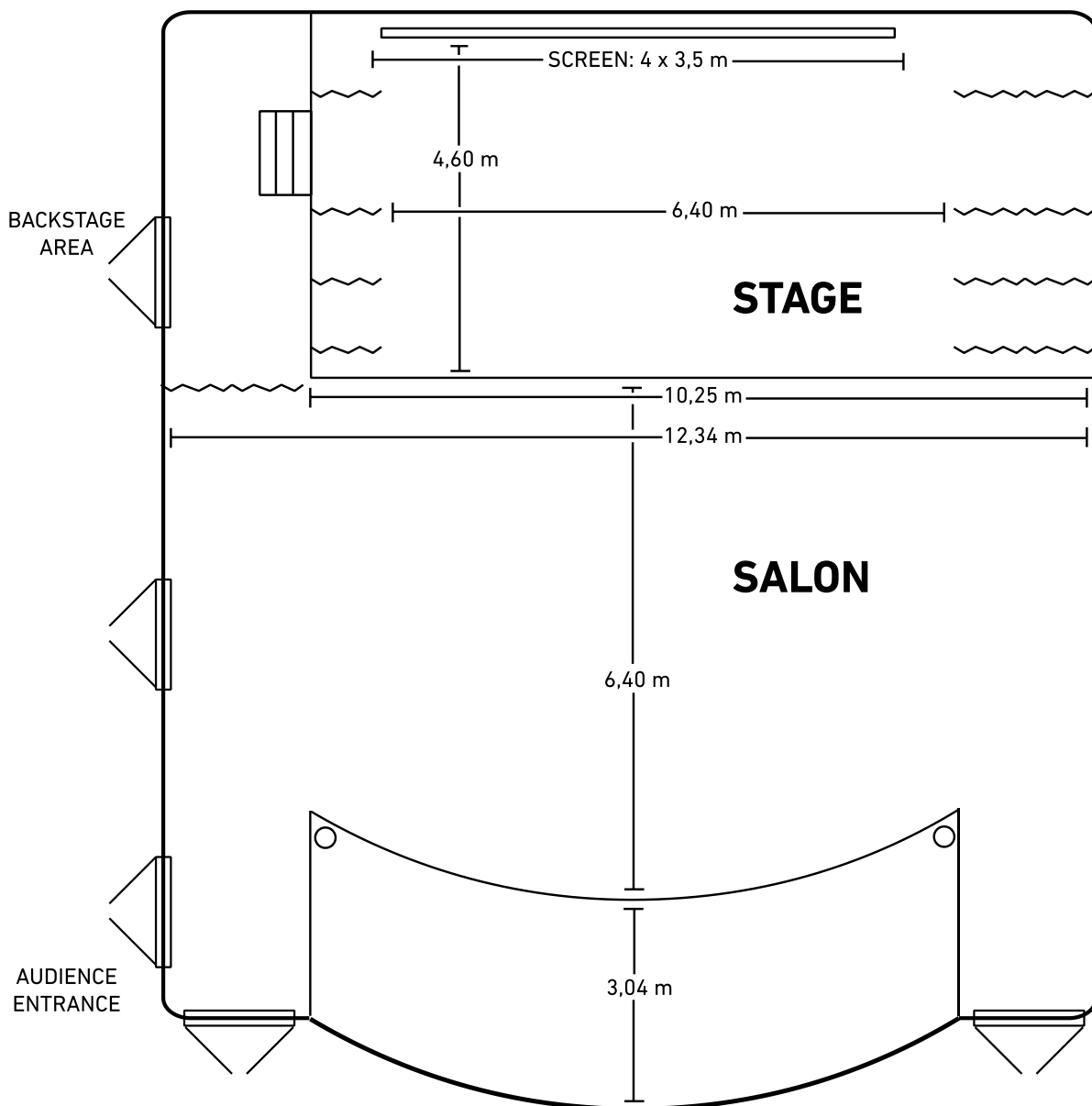
45 x red-cushioned chairs (fixed on the balcony)

3 x bar stool

2 x black bar stool with cushion

6 x black high tables, round

20 x black musician chairs





Stage



Stage with projector screen



Salon seen from the stage